

# eliteMHE Industries P Ltd



CIN No : U35999GJ2020PTC114392

**AN ISO 9001 : 2015 COMPANY**

# Management Team



## 1. Directors



**Bhavesh PANCHAL**  
DIRECTOR Operations  
BE Mechanical

having more than 20+ Years of rich experience in Design, Project Management, operation for greenfield EPC material handling projects and Cranes. He has worked with Adani, Alstom, L&T, ELECON, ANUPAM and DEMAG Cranes during his long span of career..



**Bhavesh AMIPARA**  
DIRECTOR Sales, Services  
BE Mechanical, MBA Executive

having more than 20+ years of rich & diverse experience of Lifting Equipment's mainly Cranes, gained while championing various roles including overall Strategy, Business Development, Sales, Service, After Sales, and Commissioning. He has worked as HOD Service of ANUPAM Cranes during long professional career including association with Konecranes, NORD, Senoplast, etc as PAN India responsibility.

## 2. Key Team Members

**Anil D SHAH**  
HEAD Production & Planning

having more than 30+ years of experience in production and planning of heavy manufacturing industry, material handling equipments. He has worked in different areas like Production, Planning, Contracts and Purchase during his long span of career at ELECON. He is heading our Works for manufacturing of precision machining and fabrication jobs.

**Kamlesh J PRAJAPATI**  
HEAD Design

having more than 30+ years of experience in Designing material handling equipment's and entire Coal Handling system for Power and Port Projects. He is heading our Design team.

# Prestigious Customer base



Prestigious customers base and counting.....

Adani  
Mundra port



Wonder  
Cement



Adani  
Power



ONGC



Wanakbori TPS  
Ukai TPS  
Sikka TPS  
Kevadiya HEP  
Gandhinagar TPS



L&T  
Power



## ANUPAM Ind. Ltd

# VISION & VALUES



## VISION

- To become a preferred partner of our customers by providing value added products/services, and create a profitable and sustainable brand with continuous improvement and innovation,
- Utilize advanced technology, emphasize safety and cost savings for the user through best reliability, performance, and quality.

## VALUES

- Commitment: We shall stand by our commitments and adhere to high standard of business.
- Exceed customer's expectations by Continuous improvements, innovations and embrace change.
- To build a high – performing, diverse work force, and enhance Team work and open communication within.
- Trust in People, We want to be known for our great people with Integrity
- Sustained Profitability, We want to be known as a financially sound organisation

## AN ISO 9001 : 2015 COMPANY



## Our Expertise

WE offer, leadership in conventional craftsmanship, modern technology and standardized manufacturing to consistently deliver products and services on time at a competitive price.

## Our Reward

**eliteMHE Industries P Ltd** is a young and energetic organization, who believes that our success is second to your success. We believe, *“your success is our Reward”*. It is our mission to provide customized products and services in a timely fashion, cost effectively to our clients. We hold our selves accountable to higher level and aspire to provide professional service at every touch point.

# Product Range



Lifting Solutions For all Capacities, which are Technologically Advanced, Offer High Reliability with Safety, Complete Service Support And Guaranteed Future Spares.



**Crane Supply**

- **DG EOT** Cranes
- **SG EOT** Cranes
- **Under slung** Cranes
- **Goliath** Cranes,
- **Jib** Cranes,
- **HOT** Crane,
- **Wire Rope** Hoists,
- **Chain** Hoists, etc.



**Services and Support**

**Of all type and Make of cranes**

- **Inspection** / supervision
- **AMC** Maintenance
- **On-Call** Services
- Consultation, **health check ups**
- Installation and Commissioning
- **Load test**
- **FORM 10** Factory act



**Modernization, Spare parts**

- **Modernizations**
  - Refurbishment
  - Enhance capacity
  - Upgrades features
- **Repairs & Improvements**
- **Spare Parts**

## •DG EOT Cranes

## •SG EOT Cranes

- Under slung Cranes
  - Goliath Cranes
    - Jib Cranes
    - HOT Crane
- Wire Rope Hoists
  - Chain Hoists

**Our Cranes** range consists of following parameters:

- **Capacity** ranging from **2T to 100T**
- **Span** Ranging from **5M to 40M**
- **Duty Class** up to **M8 (Class IV)**
- Designed as per IS 3177, IS 4137 and IS 807
- BS, DIN and FEM as per customer's requirement
- Deflection : **Span/750 to Span/1000.**



### Double Girder Crane

#### Features :

- Variable speed thru VVVF Drive for all motion
- Customized design for higher capacity, higher hook path and different speed.
- DSL system—Shrouded Bus bar / Cable festooning
- Flexible Trolley for negotiating radius of curvature

Great care being taken during design, selection and layout of Mechanical components so that minimum headroom and maximum hook approaches can be achieved to utilize maximum area for Crane usage and Energy efficient Electrical components for optimized use.



### Single Girder Crane

# Crane Supply

- DG EOT Cranes
- SG EOT Cranes

## • Under slung Cranes

### • Goliath Cranes

### • Jib Cranes

- HOT Crane
- Wire Rope Hoists
- Chain Hoists



**Underslung cranes** are proven to maximize customer floor space and mobility. The **cranes** are typically attached to the existing roof structure—columns to support the **crane** runway are not needed. The installation of stand-alone steel superstructures also enables the solution to be flexible to production requirements.

- Very small trolley approach dimensions meaning maximum utilization of the building's width and height.
- The possibility of using the existing ceiling girder for securing the crane track.



**Goliath Cranes** are installed in Outdoor open area and widely utilized in Construction sites, Store yards, railway yards, large water works, port & harbors, mines, quarries etc. Goliath cranes run on the Long travel rails which is laid on Ground. These type of cranes are carefully designed to withstand storm conditions and adequate safety features are installed on the machine.





# Crane Supply

- DG EOT Cranes
- SG EOT Cranes
- Under slung Cranes
- Goliath Cranes
- Jib Cranes

• **HOT Crane**

• **Wire Rope Hoists**

• **Chain Hoists**



**Wire rope hoists** are designed & manufactured generally in line with IS:3938. Salient features of our Hoist are briefly mentioned below.

**ROPE DRUM** : The rope drum is made of seamless pipe or fabricated from plates with grooves for proper seating of wire rope.

**WIRE ROPE** : As per IS:2266 of reputed make with suitable construction, FOS as per recommendation of IS:3938.

**FRAME** : Frame is fabricated from steel plates confirming to IS:2062, duly machined and rigidly aligned with end load plates.

**MOTOR** : Foot mounted squirrel cage Induction motor designed and manufactured confirming to IS:325 of reputed make are used. The motors are S4 duty, 150 Starts per hour with 40% CDF.

**BRAKE** : ACEM Disc type brakes are provided for hoist & CT motion. EHT brakes for hoisting can also be provided based on customer request.

**GEARS & PINIONS** : Helical / Spur gears are manufactured from alloy steel with solid pinions running on ball / roller bearing with oil bath lubrication. All gears & pinions are hardened and tempered as per IS:4460.

**BOTTOM PULLEY BLOCK** : Bottom Block assembly consists of Hook, Pulley and Crosshead. Hook is made from Forged steel confirming to IS:3815 and supported on Thrust bearings.

**TROLLEY** : CT Trolley is designed to suit either standard rolled steel Joist or Box girder. Trolley frame is rigidly bolted with hoist frame through series of hole. Trolley assembly consists of CT wheels, CT Motor and gearbox.

**CONTROLS** : Hoist is provided with Control Panel comprising reputed make heavy duty switchgears with adequate protection.

**LIMIT SWITCH** : To avoid over winding or over lowering of wire rope, limit switches are provided, which ensures the highest & lowest position of hook block.

## Improving your Crane Safety and Performance



- We can help to improve, Boost operational efficiency and productivity through the most Comprehensive, Value added and Advanced Crane Services for any Industry segment and any make or brand or age.
- Our Service program reduces your ownership costs while increasing productivity and efficiency, reliability and safety.



- We are team of Experienced Professionals that focuses on Value added Cranes Services through trained technicians.
- We are committed to the latest technology, innovative engineering and professional customer care.
- We offers a comprehensive range of crane services from mandatory inspections to full service maintenance contract and operations partnerships for all types and makes of Cranes.

## • Inspection / Supervision

### • AMC Maintenance

- On-Call Services
- Consultation, health check ups
- Installation and Commissioning
  - Load test
- FORM 10 Factory act

## INSPECTION SERVICES

offers inspection and maintenance programs enhanced by a sophisticated close loop maintenance management of crane components and then analyses, prioritizes and schedules required repairs.

- Periodic inspections
- Compliance and Safety inspections
- Planned supervision



## AMC, Maintenance Programs

It monitors and prevents equipment failure. By scheduling routine repairs, maintenance work and inspections, we will help to not only prevent equipment safety issues, breakdowns and compliance violations but prevent component failure. This can prevent unnecessary production downtime - saving you time and money!

We offer following type of Maintenance programs

- Preventative / Breakdown
- Operation & Preventive Maintenance
- Annual Maintenance Contract
- Need based Service Contract
- Custom Maintenance Contract

- Inspection / supervision
- AMC Maintenance

## •On-Call Services

## •Consultation,

## Health Check ups

- Installation and Commissioning
  - Load test
  - FORM 14 Factory act

## ON-CALL SERVICES

We understand that when you invest in a crane and lifting equipment, dependability is essential. Our Service technicians are ready to support customers 24 hours a day, 7 days a week.



## Consultation, health check ups

Our technicians are trained on a wide variety of different manufacturers equipment to review current health of cranes, Condition monitoring, and gap to be filled to bring it at Par with demanding application requirements.

# Services and Support

- Inspection / supervision
  - AMC Maintenance
  - On-Call Services
- Consultation, health check ups

• **Installation, Commissioning**

• **Load test**

• **FORM 10 Factory act**



- **Modernizations**
  - Refurbishment
  - Enhance capacity
  - Upgrades features

- Repairs & Improvements
  - Spare Parts OEM



## MODERNIZATIONS

Varied application requirements are continuously striving to increase production capacity by removing any perceived bottlenecks. As a result, there will be also demand for increased performance from cranes. We offer modernization services that can significantly increase safety, the reliability and performance of overhead lifting equipment by combining technology knowhow with modern equipment conditions, including different degrees of Modernization Includes:

- Refurbishment of **all types** of Cranes & Hoists.
- **Enhance capacity** and **features**
- **Upgrades** to meet today's demands
- Improve **availability, reliability** and **safety** to save **Cost** of crane operation and maintenance
- Pre-Engineered Modernization
- **Electrical Upgrades**
- **Mechanical Upgrades**

- Modernizations
- Refurbishment
- Enhance capacity
- Upgrades features

## • Repairs & Improvements

## • Spare Parts OEM



## REPAIRS AND IMPROVEMENTS

Whether your repairs are an emergency, planned or an upgrade, we will help you to get equipment up and running.

- **Planned repairs** based on inspections and maintenance reports
- Complete **Overhauling**
- **Relocation** of Crane
- Alignment of **LT Rails**
- Alignment / Upgrade of **DSL**



## SPARE PARTS

We maintains cranes of all makes and models. With this expertise, we have the capacity to supply spare parts for any crane. All parts to keep your crane in safe and reliable condition, from ropes, brakes, rope guides, motors and up-to-date electrical control systems.

- Manufacture OEM spares through reverse engineering
- Supply and fitment of brought out parts on flat cost basis





# Profile

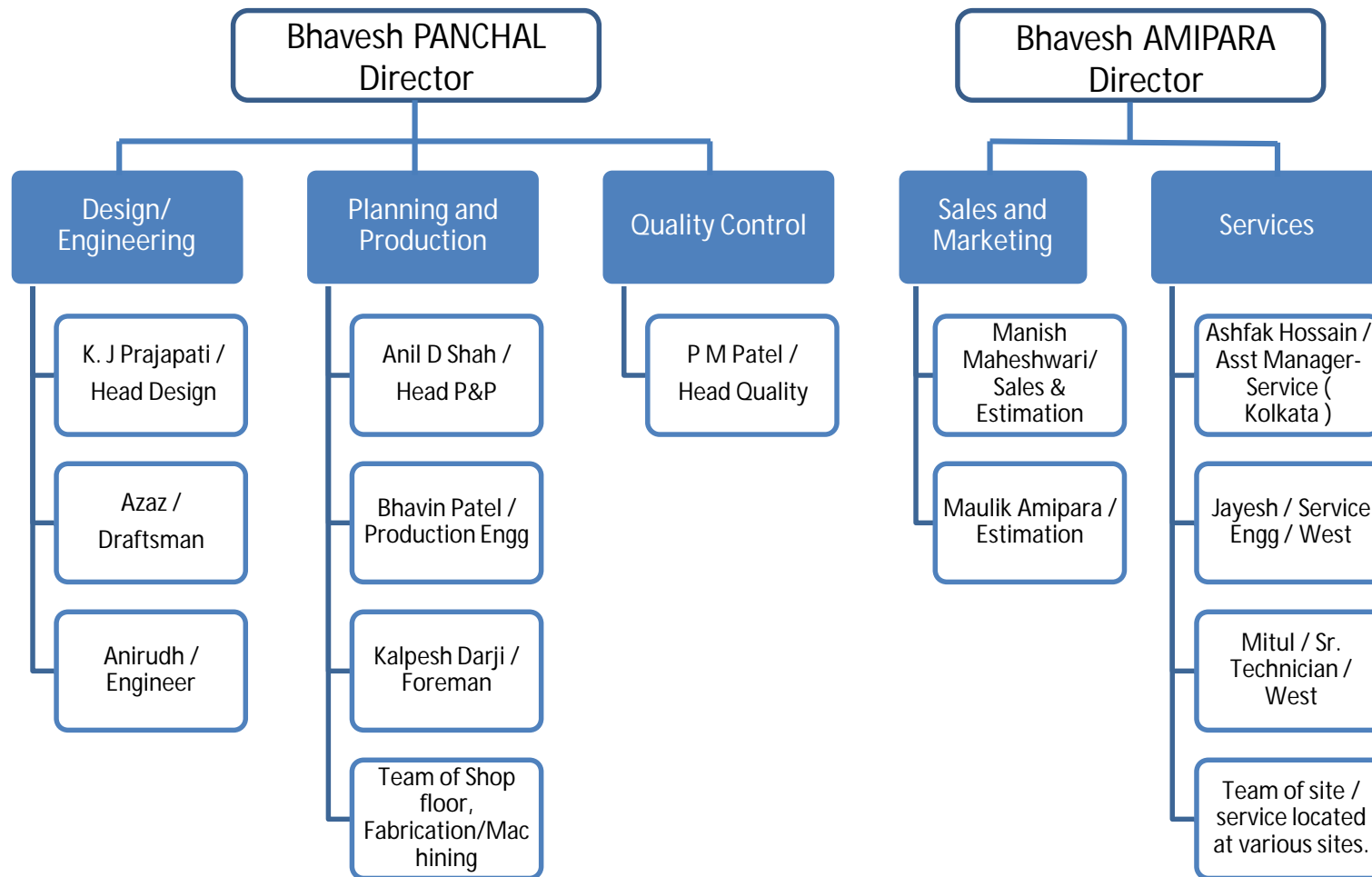


Name	<b>eliteMHE Industries P. Ltd.</b>
Postal Address	Plot-41/A, Phase-1, R.S. Corporation Compound, GIDC Estate, Vitthal Udhyanagar 388121 ANAND, Gujarat
Firm Type	Private Limited
PAN No.	AAFCE9527L
GST NO.	24AAFCE9527L1ZA
<u>WORKSHOP DETAILS</u>	<ul style="list-style-type: none"><li>• Plot Area : 3000 Sqmt, Built up Area : 600 Sqmt</li><li>• Machinery: state of art facility with latest machinery</li><li>• Material Handling : EOT Crane of 5 T Capacity, 12 ton capacity Hydra (2nos)</li><li>• Measuring Instruments:<ul style="list-style-type: none"><li>• Vernier Callipers: Ranging from 0 to 2000mm</li><li>• Micrometres: Ranging from 0 to 800 mm</li><li>• Bore Gauge: Ranging from 0 to 600 mm</li></ul></li></ul>
<u>DETAILS OF TOOLS AND TACKLES</u>	<ul style="list-style-type: none"><li>• Measuring Tape 30M and 50M</li><li>• Ring Spanners and Box Spanners – 3 Set (size 8 to 32)</li><li>• Portable Welding Machines – 2 Nos</li><li>• Hand Grinder – 5 Nos, Cutting Set – 2 Nos</li><li>• Chain Pulley Block upto 5 T – 3 Nos</li><li>• Safety Belt and Wire Rope Slings – 4 Nos each</li><li>• Safety PPEs including Safety Shoes, Double Harness, Helmet etc – 8 Sets</li><li>• Electrical Tools – 2 Sets</li></ul>

# LIST OF MACHINERY

Sr	Description & Specification	Qty
<b>Lifting Equipment</b>		
1	EOT crane (5 TON)	1
2	Hydraulic Crane ( 3 TON)	1
3	Hydraulic Crane ( 10 TON)	1
<b>Press Machines</b>		
4	Press Brake ( 3 mm × 3000 mm Lg )	2
5	Power Press ( upto 60 TON)	2
6	Hydraulic Shearing Press (50 TON)	1
7	Shearing Machine ( 6 mm × 2500 mm Lg )	1
<b>Welding Machines</b>		
8	Inverter Welding Machine ( 400 amp )	2
9	Arc Welding Machine ( 300 amp )	2
10	CO2 Welding Machine ( 400 amp )	2
<b>Grinding Machine</b>		
11	Banch Grinding Machine ( 3/4 inch cap. )	3
12	Angle Grinding Machine (AG-7)	2
<b>Cutting Machines</b>		
13	Hydraulic Hacksaw Machine ( 250 dia )	1
14	Section Cutting Machine	1
15	Section Cutting Hecksaw	1
<b>Drilling Machines</b>		
16	Drilling Machine ( 1/2 inch cap. )	3
17	Magnetic Drill (1(1/2) inch cap)	1
18	Compressor (5Hp)	1

# Organization Chart





**CONTACT US :**



## eliteMHE Industries P Ltd

Plot-41/A, Phase-1, R.S. Corporation Compound,  
GIDC Estate, Vitthal Udhyognagar 388121 ANAND  
[www.eliteMHE.com](http://www.eliteMHE.com) | [sales@elitemhe.com](mailto:sales@elitemhe.com)  
GST No : 24AAFCE9527L1ZA

